

thanos EVO KNX Casambi

Room operating unit temperature, optional with humidity | CO2 | VOC

thermokon[®]
HOME OF SENSOR TECHNOLOGY

Datasheet

Subject to technical alteration
Issue date: 05.02.2024 • A131

thanos **EVO**
KNX[®]
CASAMBI



» APPLICATION

Room control unit with KNX and Casambi radio interface for intuitive lighting control of Casambi ecosystem participants with up to four integrated sensors for recording room temperature, humidity, CO2 and VOC. A 4.8" touch screen is used to start scenes, select colors, switch lights or over KNX control shading and climate functions. A monitoring function visualizes the measured values of the integrated sensors in color. The simple configuration via the Casambi app allows device-specific settings or the configuration of scenes and lighting functions with Casambi radio.

» TYPES AVAILABLE

Touch screen room operating unit temperature + opt. humidity, CO2, VOC – BUS

- thanos EVO Temp KNX Casambi *
- thanos EVO Temp_rH KNX Casambi *
- thanos EVO CO2 Temp_rH KNX Casambi *
- thanos EVO VOC Temp_rH KNX Casambi *
- thanos EVO CO2+VOC Temp_rH KNX Casambi *

**also available as Design variant*

» SECURITY ADVICE – CAUTION



The installation and assembly of electrical equipment should only be performed by authorized personnel.

The product should only be used for the intended application. Unauthorised modifications are prohibited! The product must not be used in relation with any equipment that in case of a failure may threaten, directly or indirectly, human health or life or result in danger to human beings, animals or assets. Ensure all power is disconnected before installing. Do not connect to live/operating equipment.

Please comply with

- Local laws, health & safety regulations, technical standards and regulations
- Condition of the device at the time of installation, to ensure safe installation
- This data sheet and installation manual

» PRODUCT TESTING AND CERTIFICATION



Declaration of conformity

The declaration of conformity of the products can be found on our website
<https://www.thermokon.de/direct/en-gb/categories/thanos-evo>

» MOUNTING ADVISE ROOM SENSORS

The Accuracy of the room sensors are influenced by the technical specifications as well as the positioning and the installation type.

During Assembly:

- Seal mounting box (if present).
- Installation type, air draught, heat source, radiation heat or direct sunlight can affect the measurement.
- Bulding material specific properties of the installation place (*brick-, concrete-, partition wall, cavity wall, ...*) can affect the measurement. (e.g.: *Concrete accepts room temperature variation slower than cavity walls*)

Assembly not recommendet in...

- Air draught (e.g.: close to windows / doors / fans ...)
- Near heating sources,
- Direct sunlight
- Niches / between furniture / ...

» BUILD-UP OF SELF-HEATING BY ELECTRICAL DISSIPATIVE POWER

Sensors with electronic components always have a dissipative power, which affects the temperature measurement of the ambient air. The dissipation in active temperature sensors shows a linear increase with rising operating voltage. This dissipative power has to be considered when measuring temperature. In case of a fixed operating voltage ($\pm 0,2$ V) this is normally done by adding or reducing a constant offset value.

Thermokon transducers can be operated with variable operating voltages. The transducers are set at the factory with a reference operating voltage of 24 V =.

At this voltage, the expected measuring error of the output signal will be the least. Other operating voltages, can cause a measurement deviation changing power loss of the sensor electronics.

A recalibration can be carried out directly on the unit or via a software variable (app or bus).

Remark: Occurring draught leads to a better carrying-off of dissipative power at the sensor. Thus temporally limited fluctuations might occur upon temperature measurement.

» APPLICATION NOTICE FOR HUMIDITY SENSORS

At regular environmental condition, it is recommended to calibrate the sensor annually to check the compliance with the accuracy required in the application. The following conditions can damage the sensor element or lead in long term to loss of the specified accuracy:

- Mechanical stress
- Contamination (e.g. dust / fingerprints)
- Aggressive chemicals
- Ambient conditions (e.g. condensation on measuring element)



Do not touch the sensor elements!

Re-calibration or exchange of the sensor element are not subject of the general warranty.

» INFORMATION ABOUT SELF-CALIBRATION FEATURE CO2

All gas sensors are subject to drift. The degree of drift is dependent on the use of components and product design. In addition, the following environmental conditions, among others, can accelerate/ favor the aging and wear of the sensors:

- Mechanical stress (also due to temperature fluctuation)
- Contamination (dust / fingerprints e.g.)
- Abrasive chemicals
- Environmental influences (high humidity / condensation on measuring element)

An internal self calibration function with dual channel technology compensates the caused drift. Thermokon sensors are for permanent use (e.g. hospitals).

» INFORMATION ABOUT INDOOR AIR QUALITY CO2

EN 13779 defines several classes for indoor air quality:

Category	CO2 content above the content in outdoor air in ppm		Description
	Typical range	Standard value	
IDA1	<400 ppm	350 ppm	Good indoor air quality
IDA2	400.. 600 ppm	500 ppm	Standard indoor air quality
IDA3	600..1.000 ppm	800 ppm	Moderate indoor air quality
IDA4	>1.000 ppm	1.200 ppm	Poor indoor air quality

» APPLICATION NOTICE FOR AIR QUALITY SENSORS VOC

Volatile organic compounds (VOC) are gaseous and vaporous substances of organic origin in the air. VOC-sensors monitor the significant part of humanly olfactory sensed air quality. (e.g. body odor | tobacco smoke | odor of materials, furniture, carpets, paint, adhesives, ...)

The VOC-Value is an application-specific indication for air quality and doesn't provide any information about individual components of VOC

A VOC sensor oxidises the organic molecules that collide with it, which results in changing the resistance of the semiconductor.

Any contact with the sensitive sensors must be avoided and will invalidate the warranty.

The VOC Sensor is factory calibrated and can be calibrated via NOVOSapp subsequently, if needed.

» TECHNICAL DATA

Measuring values	temperature, optional humidity CO2 VOC
Network technology	KNX (TP1) Casambi (Evolution) 2,4 GHz
Power supply	24 V = (±10%) SELV
Power consumption	typ. 2,5 W (24 V =)
Bus current consumption	3 mA
Measuring range temp	0..+50 °C
Accuracy temperature	±0,5K (typ. at 21 °C)
Inputs	3x input for floating contact or 2x input for floating contact + 1x input for external NTC10k)
Control functions	occupancy signalling, light ON/OFF/DIM, setup scenarios, blinds UP/DOWN/SET, fan stages, setpoint, ECO-Function, measured value RGB-LED indication /display & history .
Display	TFT 4,8", 1120x480 px, capacitive touch technology
Enclosure	PC V0 and glass, Design surface glass, white or black
Protection	IP30 according to DIN EN 60529
Cable entry	rear entry
Connection electrical	tool-free mountable spring terminal, max. Ø 0,8 mm
Ambient condition	0..+50 °C, max. 85% non-condensing
Mounting	surface mounted on flush-mounting box (Ø=60 mm) , base part can be mounted and wired separately

» Humidity (optional)

Measuring range humidity (optional configurable)	relative humidity (default) 0..100% rH configurable via Thermokon NOVOSapp or BUS	Enthalpy 0..85 KJ/kg	absolute humidity 0..50 0..80 g/m³,	dew point 0..+50 -20..+80 °C,
Accuracy humidity	±2% between 10..90% rH (typ. at 21 °C)			

» CO2 (optional)

Measuring range CO2	0..2000 0..5000 ppm (configurable via ETS or Thermokon NOVOSapp)
Accuracy CO2	±(50 ppm +3 % of reading), (typ. at 21 °C, 50% rH, 1015 hPa)
Calibration	self-calibration dual channel
Sensor	NDIR (non-dispersive, infrared)

» VOC (optional)

Measuring range VOC	0..100 %
Sensor	VOC sensor (heated metal oxide semiconductor)

» CONFIGURATION AND COMMISSIONING

The functional description of the device, as well as the KNX Interface description is documented in the KNX manual.



KNX Manual:

The KNX manual is found on our website <https://www.thermokon.de/download>

» NOTES ON DISPOSAL



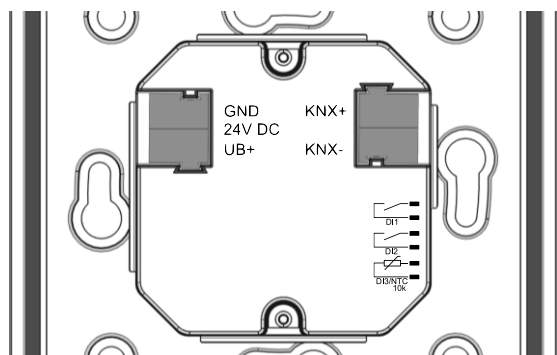
The crossed-out wheeled bin symbol indicates that the product or removable batteries must not be disposed of with household or commercial waste. Within the EU, you are legally obliged to dispose of the product separately and appropriately in accordance with the national laws of your country. Alternatively, please contact your supplier or Thermokon Sensortechnik GmbH. Further information can be found at: www.thermokon.com

» CONNECTION PLAN

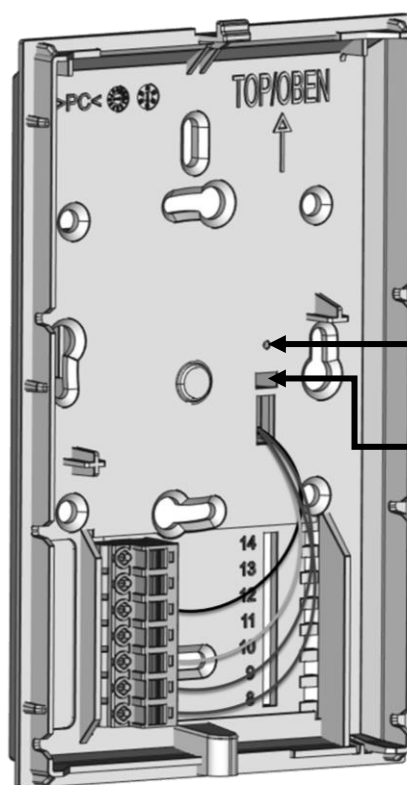
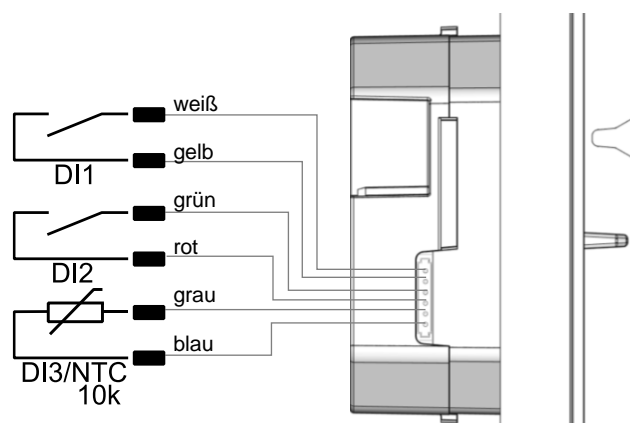
Room operating unit – active KNX

The power supply and the bus line are connected via socket terminals on the rear of the device.

When the programming button is pressed, the device is switched to programming mode and the programming LED starts lighting.



On the side of the lower part of the housing there is a socket connector for connecting up to 3 digital inputs (optional as an NTC10k). The connection is made via a pre-assembled female connector (included in delivery).



- 7= n.c.
- 6= n.c.
- 5= WH (white)
- 4= n.c.
- 3= YE (yellow)
- 2= BK (black)
- 1= RD (red)

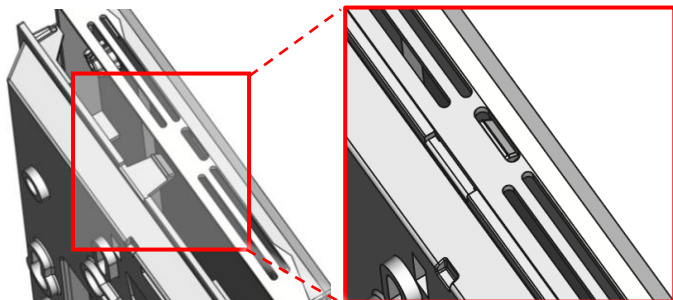
» MOUNTING ADVICES

Please make sure that the device is de-energized if you want to install it!

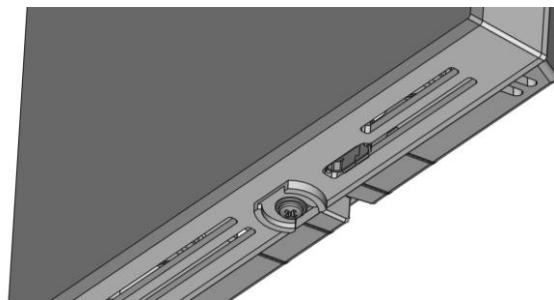
The installation can be performed on a flush-mounted box. A representative place should be selected. Sunshine and draft, e.g. in the installation tube should be avoided, so that the measurement result is not falsified. Seal the end of the installation tube.

- For wiring, the upper part of the device must be removed from the base plate. Base plate and upper part are detachably connected to each other by means of locking lugs.
- The mounting of the base plate on the flat wall surface is done with rawplugs and screws.
- Finally, the device is attached to the base plate and fixed with the screw.

Snap the upper part of the housing into the locking lug on the upper side



Fix the upper part of the housing on the underside with the screw

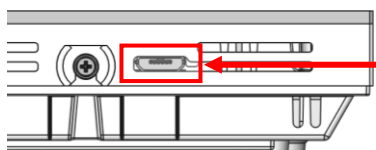


» CONFIGURATION

The Configuration is carried out in the powered state. The following options are available for configuration:

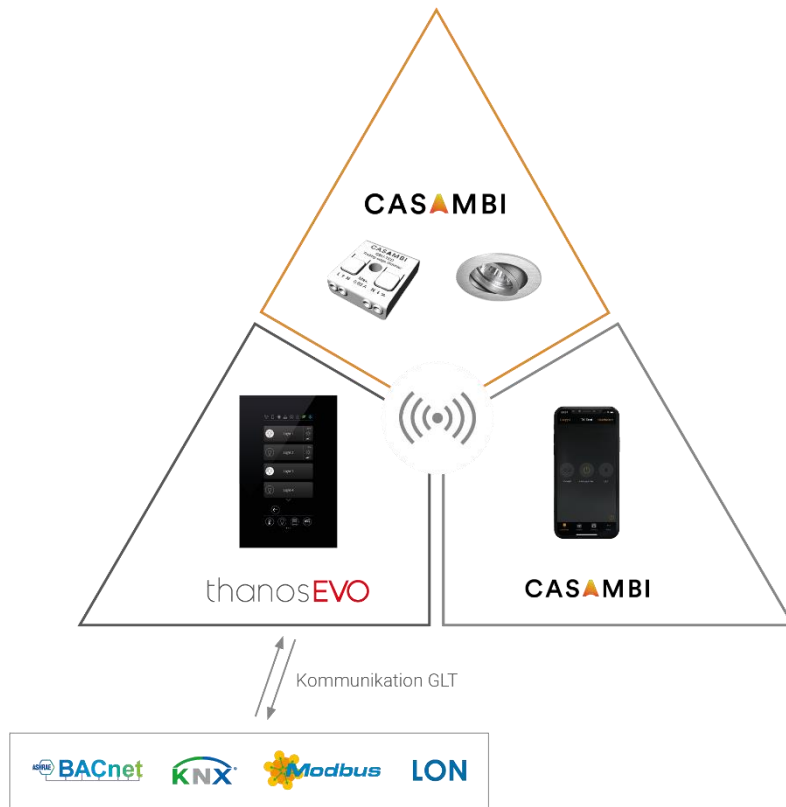
Connection to device	KNX TP1	Micro-USB	Casambi Communication
Configuration-adapter	USB-interface KNX	Thermokon USB-interface	internal
Configuration-software	PC/Notebook with ETS software <i>Configuration via Desktop PC/Notebook with ETS software and USB-interface KNX</i>	PC/Notebook with uConfig software <i>Partly configuration with Thermokon software uConfig, via Thermokon USB-interface</i>	Smartphone/Tablet with CASAMBI App <i>Parameterization with mobile device via bluetooth and CASAMBI App.</i>

* Commercially available Bluetooth dongles or USB to Micro-USB adapter cables are not compatible. You need a mobile device that supports at least Bluetooth version 4.1. The configuration app with the corresponding instructions can be downloaded from the Google Play Store or the Apple App Store.



Position of the micro USB port, see bottom of the device, for configuration with Bluetooth dongle or Thermokon USB-interface

» CASAMBI COMMUNICATION



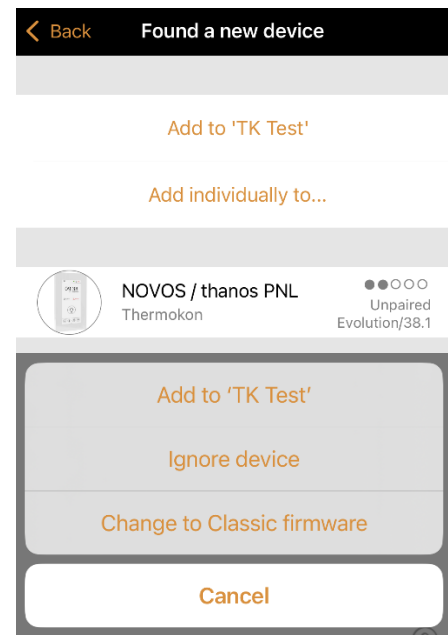
A thanos EVO Casambi serves as an interface between a Building Management System and a coupled Casambi network.

All information received from the thanos EVO via Casambi is passed on to the BMS, so that the current status can be viewed and used in the building control system at any time.

Commands for Casambi functions sent to thanos EVO via bus communication are sent to the Casambi network via Casambi radio.

» CASAMBI COMMISSIONING

1. Connect the device to the power supply. Observe the connection diagram!
2. Open Casambi App (iOS App Store / Android Play Store)
If an unpaired device is found, it is suggested to add the device to a network.
3. Add thanos EVO to an existing Casambi network, is required switch to other Casambi network first.
After pressing the "back" button the network can be changed ("my networks").
4. The device appears in the gateway section.
5. Configure the thanos Evo Casambi parameters.



» CASAMBI PARAMETER

PARAMETERS	
Settings	d12r >
Favorites	0000 >
G1 selection	Select group >
G1 name	G1 Name >
G1 type	30112740 >

Settings (parameter LTBC)**L = language**

D – german
E – english
X – no change

T = Time synch

0 – no time synch
1 – time synch from Casambi to device

B = Behavior

1 – external control (configurable via BUS)
2 – standalone/panel (configurable only via CASAMBI)

C = display color scheme

x background color / text color
0 no change

B black / white
W white / black

G green / white
L blue / white

R red / white

Example settings: d12l = german | time synch | standalone/panel | background color blue / text color white

PARAMETERS	
Settings	d12r >
Favorites	0000 >
G1 selection	Select group >
G1 name	G1 Name >
G1 type	30112740 >

Favorites* (ABCDE)

A favorite button 1
B favorite button 2
C favorite button 3
D favorite button 4
E favorite button 5

Default value: 0 - none

i.E.: 0b300

– none / scene 2 / group 3

PARAMETERS	
Settings	d12r >
Favorites	0000 >
G1 selection	Select group >
G1 name	G1 Name >
G1 type	30112740 >

Gx selection / name
(Selection / Input field)

Selection – Casambi group

Name – group name

Favorites

1	Group 1
2	Group 2
3	Group 3
4	Group 4
5	Group 5
6	Group 6
7	Group 7
8	Group 8

a	Scene 1
b	Scene 2
c	Scene 3
d	Scene 4
e	Scene 5
f	Scene 6
g	Scene 7
h	Scene 8

i	Presence
j	Eco
k	Climate menu
l	Lighting menu
m	Blind menu
n	Scene menu
o	Monitoring menu
p	fan menu (Novos 7)

q	shading 1
r	shading 2
s	shading 3
t	shading 4
u	shading 5
v	shading 6
w	shading 7
x	shading 8

PARAMETERS	
Settings	d12r >
Favorites	0000 >
G1 selection	Select group >
G1 name	G1 Name >
G1 type	30112740 >

Gx type

(Light group configuration)

ITDSMnMx

I – Icon

T – Type

D – Dim function

S – Step size

Mn / Mx – minimum / maximum
Color temperature

Scene symbol	11111111
S1 selection	Select scene >
S1 name	S1 Name >
S2 selection	Select scene >
S2 name	S2 Name >

Scene symbol

(Scene symbol configuration)*

1. digit = scene symbol 1
2. digit = scene symbol 2...

Sx selection / name
(Selection / Input field)

Selection – scene

Name – scene name

Gx Type parameter listing

I	0 – universal, 1 – spot, 2 – cassette, 3 – floor lamp (default)
T	0 – slider (default), 1 – RGBW colourpicker, 2 – colour temperature picker
D	0 – not dimmable, 1 – dimmable (default)
S	0 – 1, 1 – 1 (default), 2 – 2, 3 – 3, 4 – 4, 5 – 5, 6 – 10, 7 – 15, 8 – 20 (in %)
Mn	Input value (2 digits) multiplied with 100 = minimum kelvin (Color Temperature) (i.E.: Mn = 27 -> CTmin = 27 * 100 = 2700K (default))
Mx	Input value (2 digits) multiplied with 100 = maximum kelvin (Color Temperature) (i.E.: Mx = 40 -> CTmax = 40 * 100 = 4000K (default))

Example Gx Type: 30112740 = floor lamp | slider | dimmable | 1 | min kelvin color temp 2700k | max kelvin color temp 4000k

Scenen symbol parameter listing

0	work (briefcase)
1	presentation (canvas)
2	cinema (screen)
3	party (cocktail glass)
4	bedroom (bed)
5	food (serving bell)
6	do not disturb (lock)
7	cleaning (vaccum cleaner)
8	scene (clapperboard)

Example scene symbol: 02437000 = scene 1: work | scene 2: cinema | scene 3: bedroom | scene 4: party | scene 5: cleaning

» DIMENSIONS IN MM (IN.)



» ACCESSORIES (OPTIONAL)

Rawlplugs and screws (2 pcs. each)
 PSU-UP24 – flush mount power supply 24 V (AC Input: 100..240 V ~ | DC Output 24 V = 0,5 A)

Item No. 102209
 Item No. 645737

Thermokon USB-interface
 USB-interface KNX

Item No. 597838
 Item No. 806190